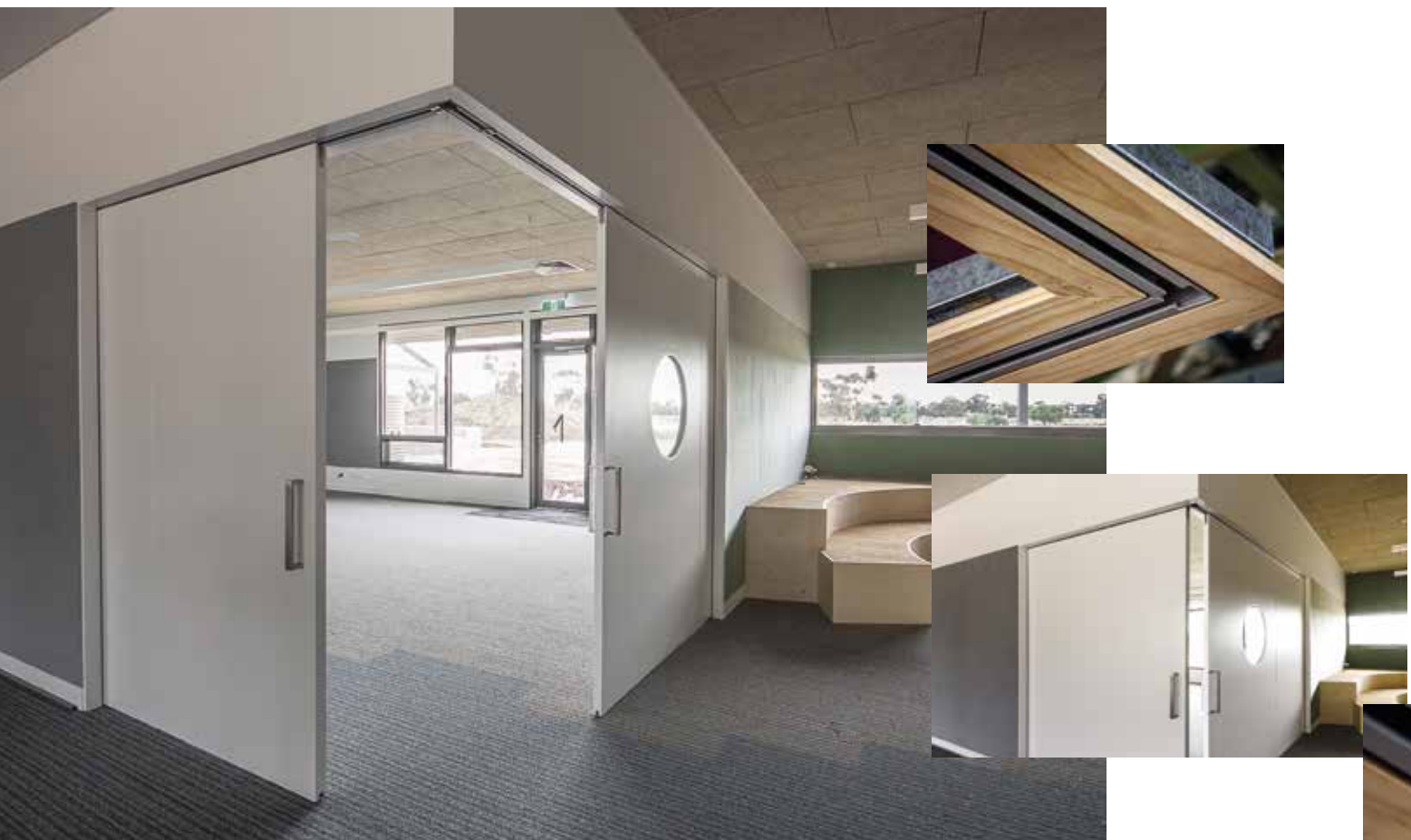


Ladenko Sorrento:

90° Corner Meeting Cavity Sliding Door Design

Custom Sizes | 80-180kg Door Weight | Custom Stud Sizes | Architrave | Square Set | P50 Shadow Line | P25 Stopping Angle



Designed to be installed so that the doors meet at 90 degrees and to provide a flush finish between the head track and the ceiling

The Ladenko 'Sorrento' corner meeting cavity sliding door system is a premium product which provides the ideal solution for a wide range of commercial and residential applications. Designed to be installed so that the doors meet at 90 degrees and to provide a flush finish between the head track and the ceiling, the Sorrento design also creates smooth continuous flow between rooms. A square-set finish around the perimeter of the frame provides a seamless finish to ensure your design is uninterrupted.

The Sorrento is a custom-made cavity slider fitted with a heavy duty extruded aluminium track system for an ultra smooth operation, that can carry doors weighing up to 180kg. The Sorrento corner meeting door system is available in a variety of finishing options including square set, P50 Shadow line, P25 stopping angle and architrave. Design options also include flush head detail, pelmet detail and overtaking doors.

One of the most common uses of the corner meeting cavity sliding door system is for creating an opening in the corner of a room for easy access, such as a conference room, school room, within a studio apartment and many other applications.